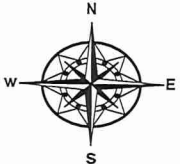


GO TRAFFIC MANAGEMENT

Date: June 13, 2019 Author: Danielle George 604-444-3732 ext 237 Project: 2685845
 Go Traffic Management: 170-8061 Lougheed Hwy, Burnaby, BC V5A 1W9 Office: 604-444-3799 Fig: 0.0
 Dwg: 002

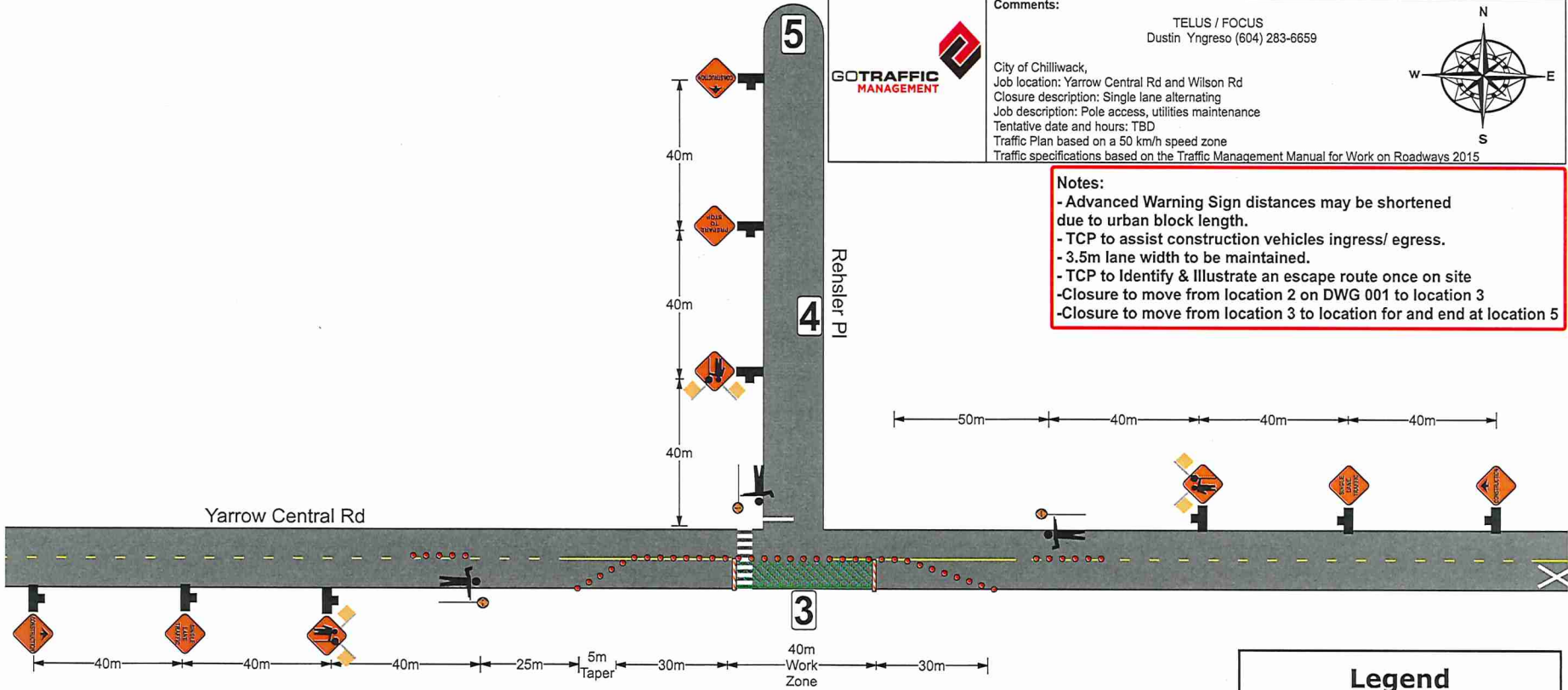
Comments: TELUS / FOCUS
 Dustin Yngreso (604) 283-6659

City of Chilliwack,
 Job location: Yarrow Central Rd and Wilson Rd
 Closure description: Single lane alternating
 Job description: Pole access, utilities maintenance
 Tentative date and hours: TBD
 Traffic Plan based on a 50 km/h speed zone
 Traffic specifications based on the Traffic Management Manual for Work on Roadways 2015



Notes:

- Advanced Warning Sign distances may be shortened due to urban block length.
- TCP to assist construction vehicles ingress/ egress.
- 3.5m lane width to be maintained.
- TCP to Identify & Illustrate an escape route once on site
- Closure to move from location 2 on DWG 001 to location 3
- Closure to move from location 3 to location for and end at location 5



Legend

- Tripod Stand
- ◆ Construction Ahead #C-018-1A
- ◆ Flagger #C-001-1
- ◆ Single Lane Traffic #C-030-8
- ◆ Prepare To Stop #C-029
- ⦿ Flagger
- Tubular
- Barricade
- ▨ Work Area

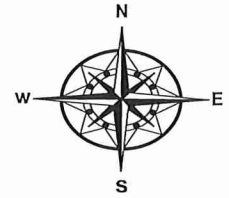
Date: June , 2018 Author: Name and Number Project: WO#/ NTWK#
 Go Traffic Management: 170-8081 Lougheed Hwy. Burnaby, BC V5A 1W9 Office: 604-444-3799 Fig: 0.0
 Dwg: 001

Comments:

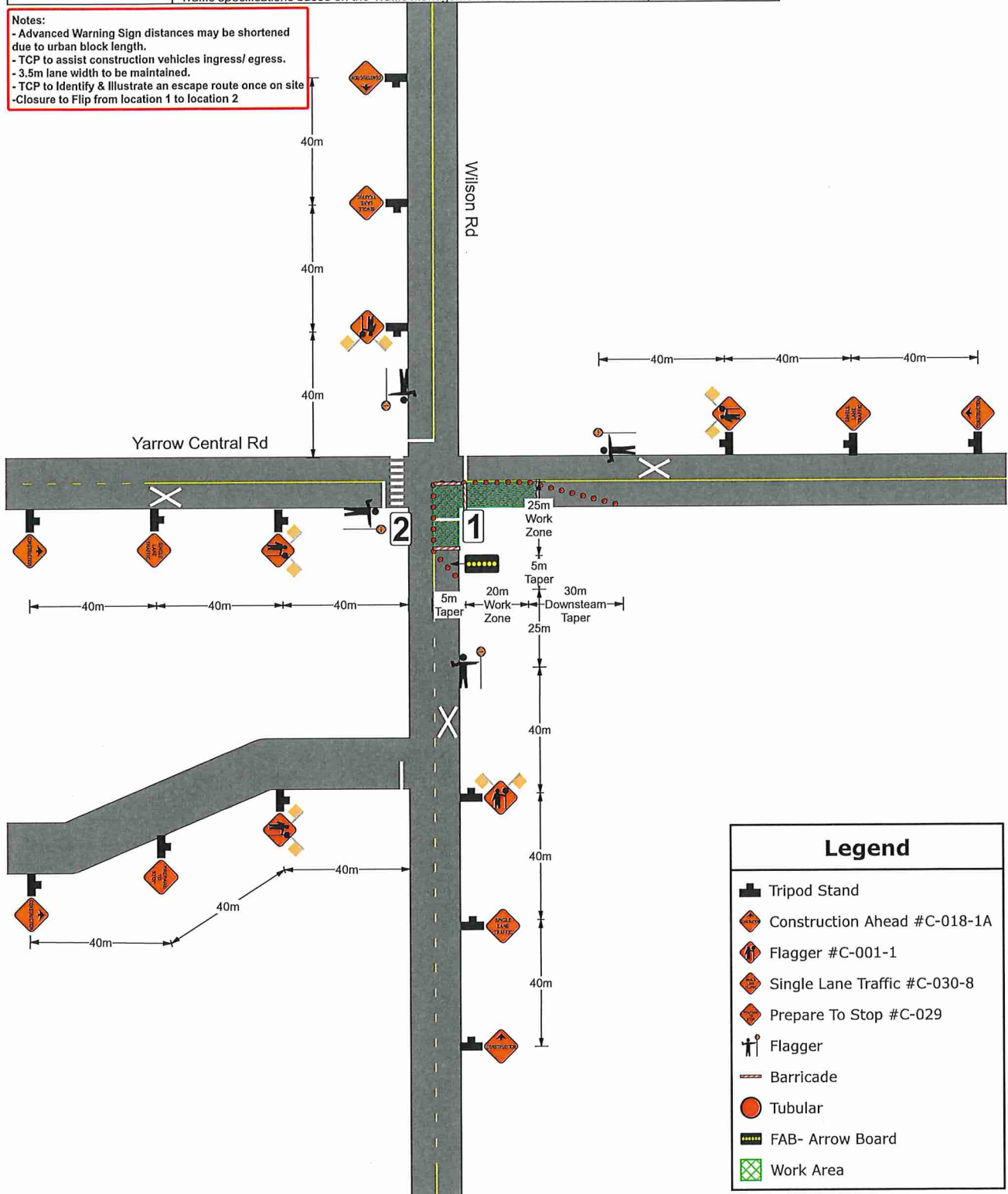
CONTRACTOR
 CONTACT AND NUMBER



City of
 Job location:
 Closure description:
 Job description:
 Tentative date and hours:
 Traffic Plan based on a 50 km/h speed zone
 Traffic specifications based on the Traffic Management Manual for Work on Roadways 2015



Notes:
 - Advanced Warning Sign distances may be shortened due to urban block length.
 - TCP to assist construction vehicles ingress/ egress.
 - 3.5m lane width to be maintained.
 - TCP to Identify & Illustrate an escape route once on site
 - Closure to Flip from location 1 to location 2



Legend	
	Tripod Stand
	Construction Ahead #C-018-1A
	Flagger #C-001-1
	Single Lane Traffic #C-030-8
	Prepare To Stop #C-029
	Flagger
	Barricade
	Tubular
	FAB- Arrow Board
	Work Area